

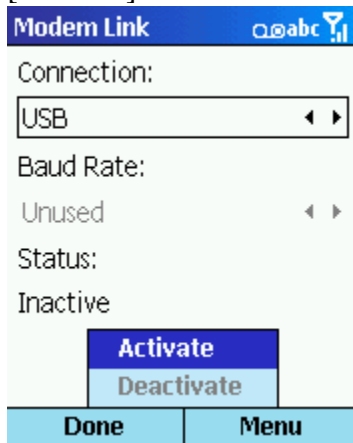
How to Setup Your Pocket PC as a Wireless Modem

Connecting a Windows XP Notebook to GPRS by using the Microsoft Windows Powered Pocket PC as a modem is easy if you know how to do it. This is a step-by-step which works for all Windows XP Notebooks and Desktops with all Pocket PCs like the T-Mobile MDA; Cingular 8125 and others and works for all GSM/GPRS carriers world wide.

Installing the USB Modem Driver on the Notebook

Before you can setup a connection and dial into the GPRS network of your cellular operator, you have to add the USB driver to your Notebook, otherwise Windows XP will not recognize the Pocket PC as a modem.

- On your Pocket PC click “Start” and then "Modem Link" and select [Connection: USB].
- [Activate] the modem from [Menu] now.

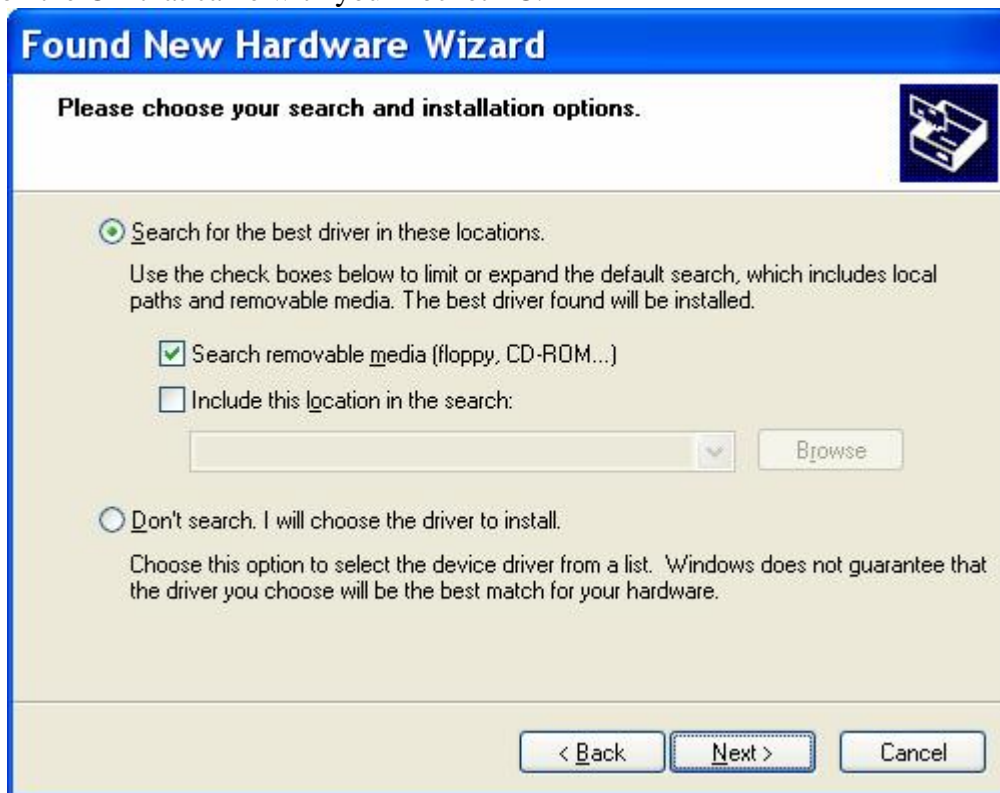


- Now connect your USB cradle or USB cable with your Pocket PC and the USB port on your Notebook.
- Windows XP will recognize the Pocket PC as a new USB device and will start to install the required modem driver.

How to Setup Your Pocket PC as a Wireless Modem



- Now select the location where you have stored the driver. The driver is located on the CD that came with your Pocket PC.

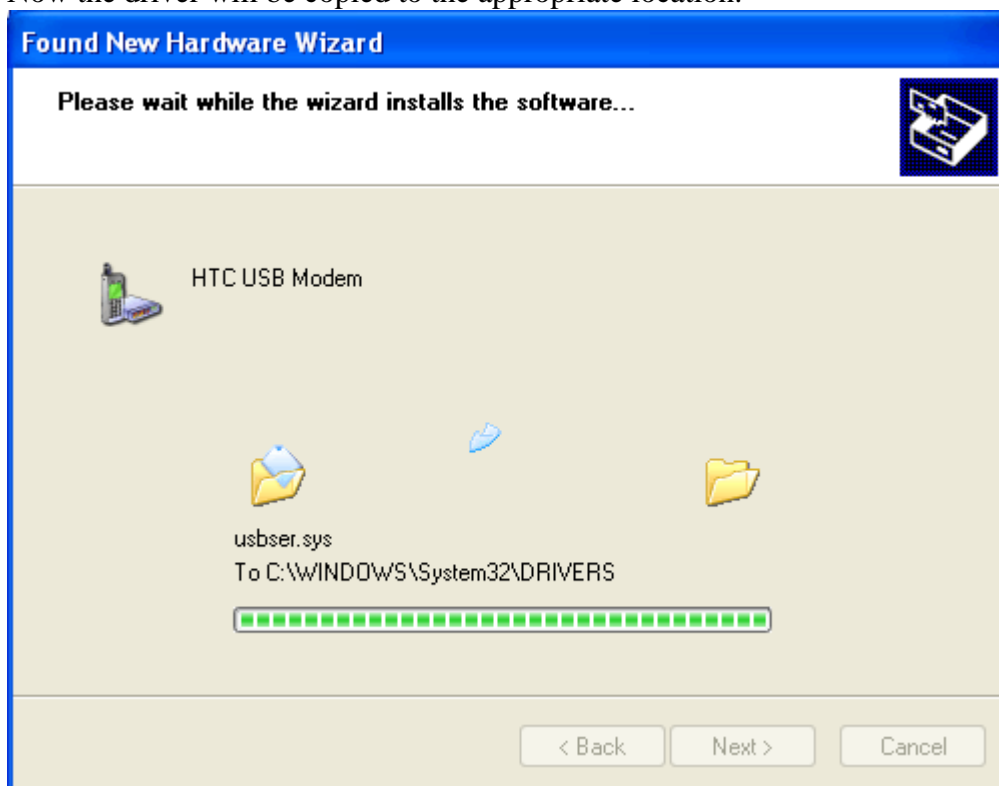


How to Setup Your Pocket PC as a Wireless Modem

- Windows XP will notify you that the driver isn't digital signed so click [Continue Anyway].

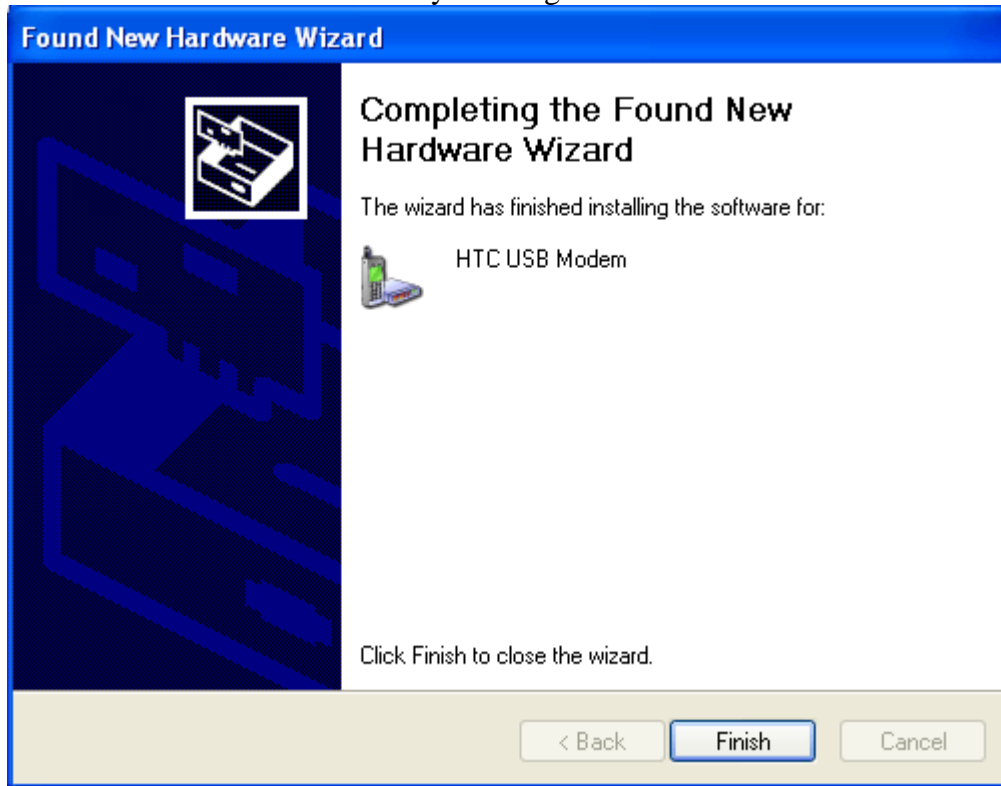


- Now the driver will be copied to the appropriate location.



How to Setup Your Pocket PC as a Wireless Modem

- If the installation was successful you will get a notification from Windows XP



and you will see additional pop-up notifications:

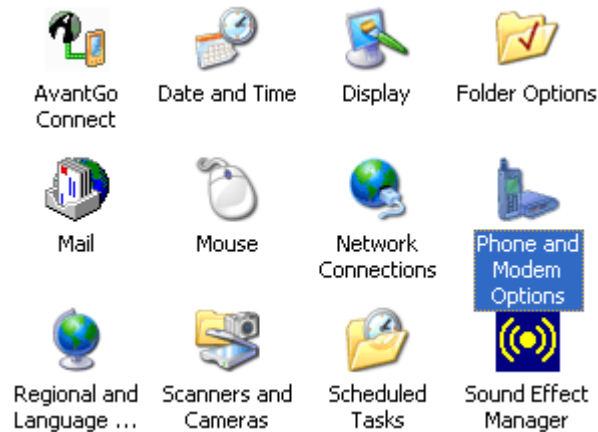


Configuring the USB Modem Driver on the Notebook

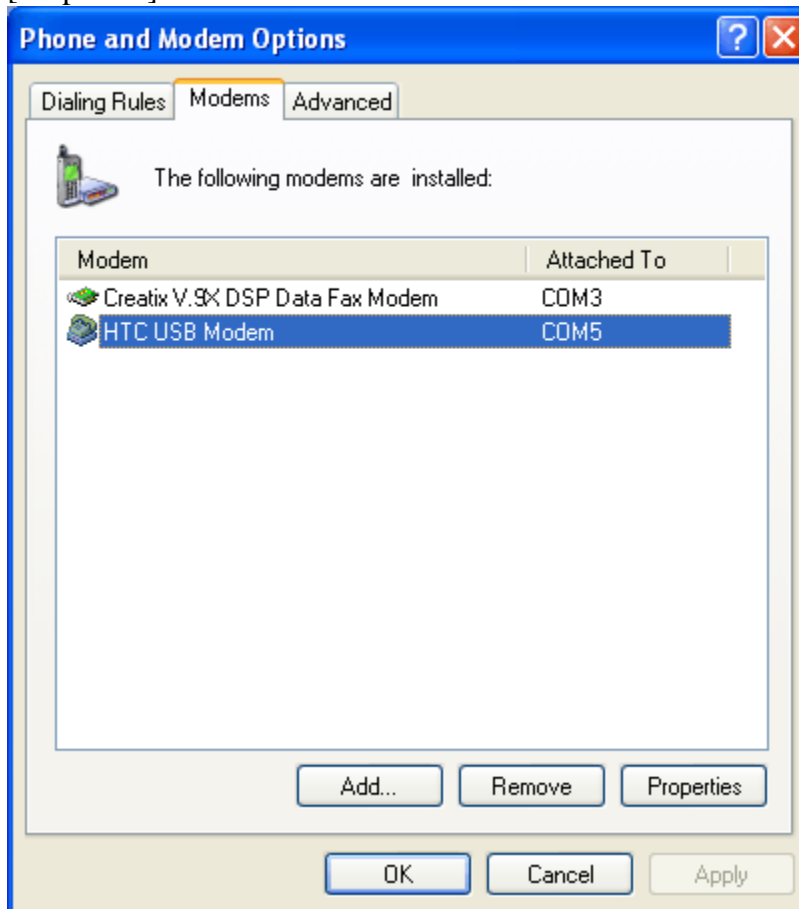
Now you need to configure this modem to make sure it dials correctly into the GPRS network of your carrier. Make sure that the USB connection in "Modem Link" on your Pocket PC is still "Active".

How to Setup Your Pocket PC as a Wireless Modem

- Open "Control Panel" in XP and select "Phone and Modem Options".

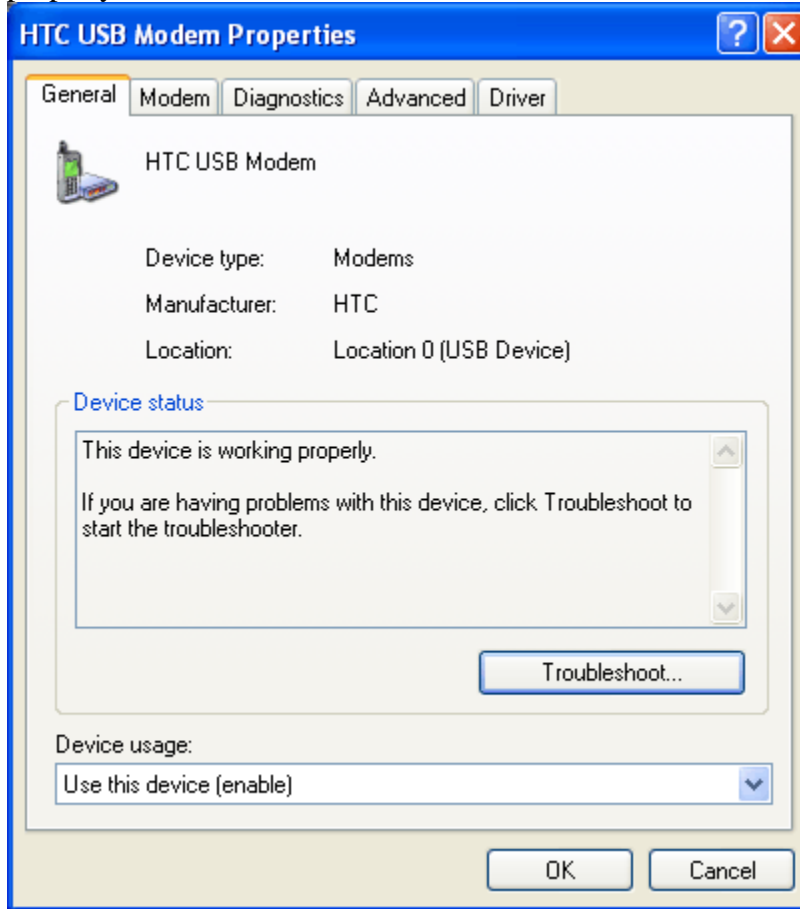


- Here the new modem called "HTC USB Modem" should appear. If so click [Properties].



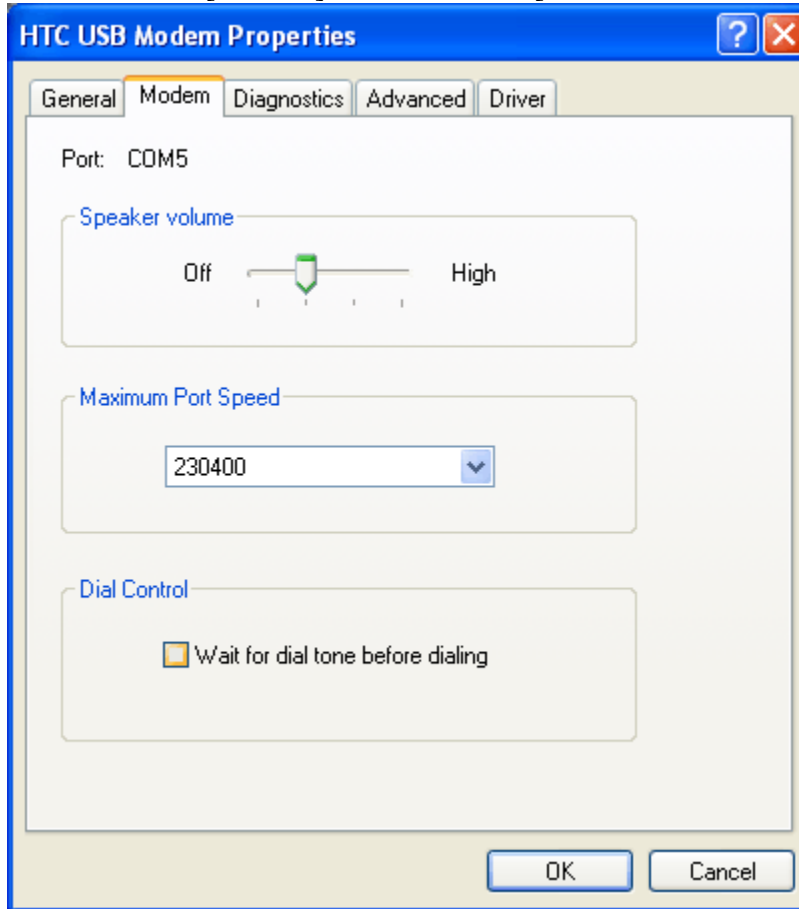
How to Setup Your Pocket PC as a Wireless Modem

- Make sure that XP indicates the "Device status" as "This device is working properly".



How to Setup Your Pocket PC as a Wireless Modem

- Now select the [Modem] tab and disable [Wait for dial tone before dialing].



- Select [Advanced] tab now. This is the most important part of the whole configuration.
Here you have to add the appropriate settings for your GPRS connection and have to tell the Pocket PC which "APN" (Access Point Node) should be used for connection. The APN is pretty similar to a Proxy Server and operators might use more than one/different for different services. Typically an operator has up to three APNs within the network: one for Internet, one for WAP (Wireless Application Protocol) and maybe one for MMS (Mobile Multimedia Messaging System).
Depending on which service you want to create a connection to, you have to use the appropriate APN name. Your operator or its web site can give you the APN names.

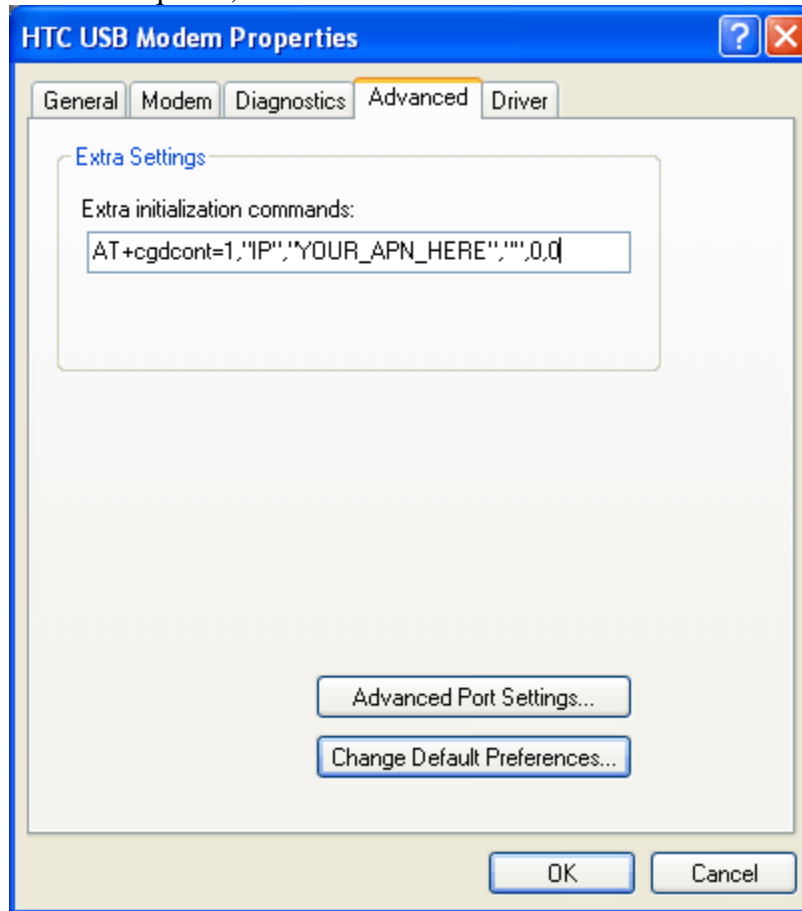
Here is the connection for the T-Mobile MDA:

AT+cgdcont=1,"IP","wap.voicestream.com",,,,,0,0

If you have already used GPRS with your Pocket PCs and any other cell phone you might notice the ',,,,,0,0' behind the APN. With the Pocket PC this values are

How to Setup Your Pocket PC as a Wireless Modem

absolute required, otherwise the Pocket PC won't connect to GPRS!



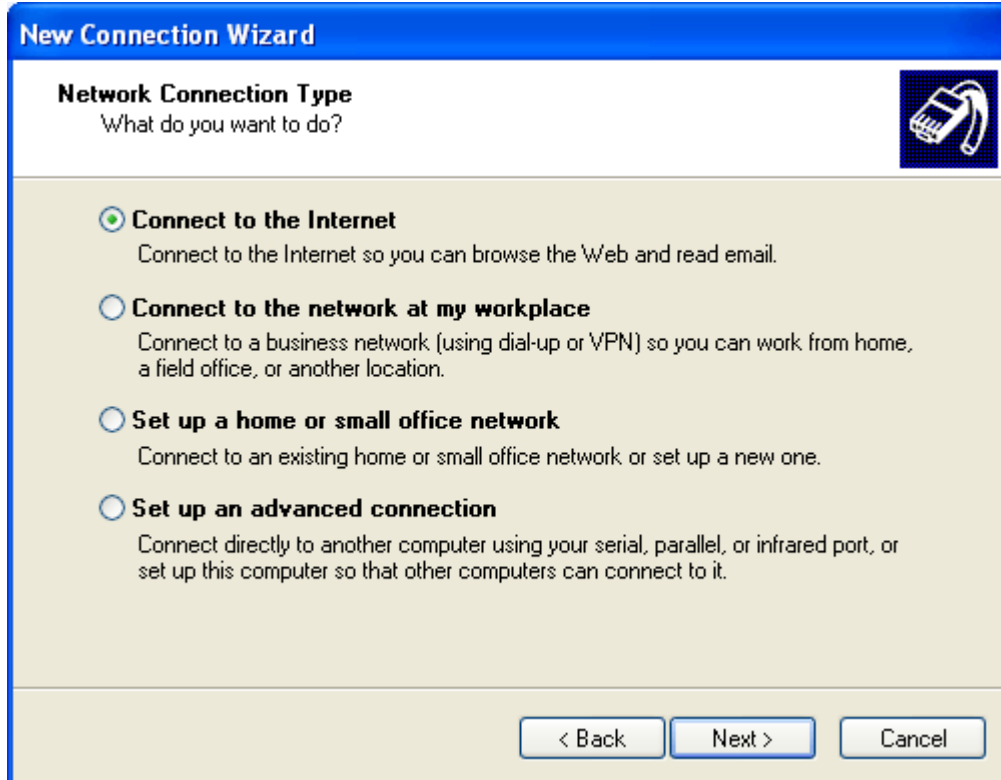
- Click [OK] to save the settings now.

Creating a Dial-Up Connection

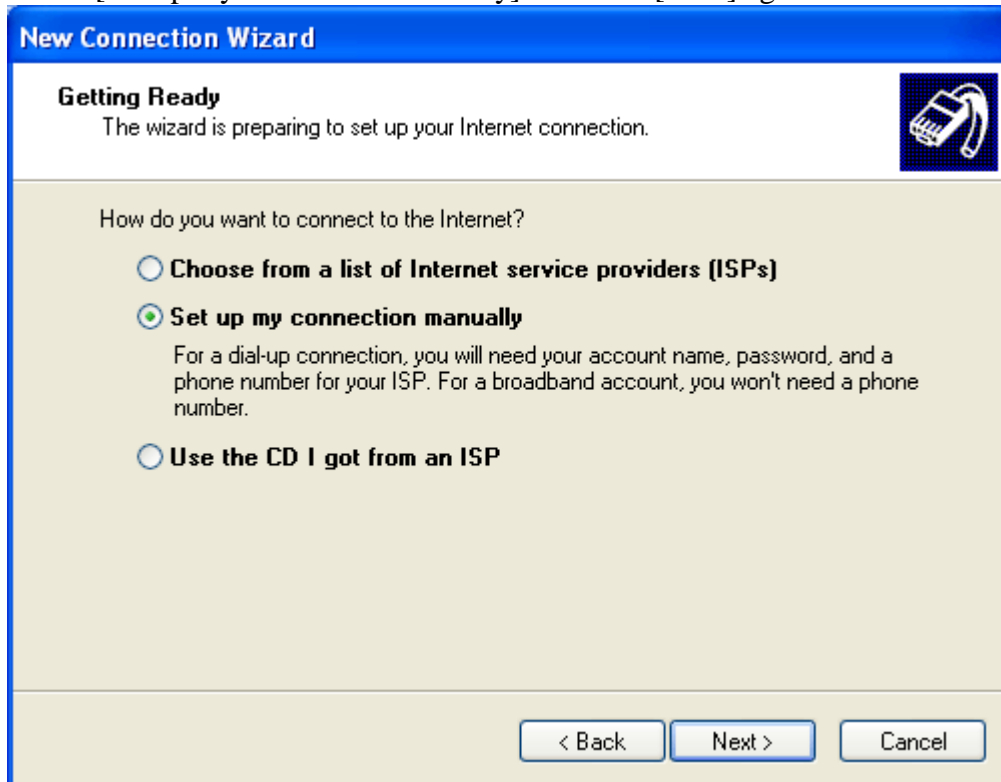
Now you have configured everything proper and you can finally create a dial-up connection.

How to Setup Your Pocket PC as a Wireless Modem

- Open the "New Connection Wizard" in XP and select [Connect to Internet] and click [Next].

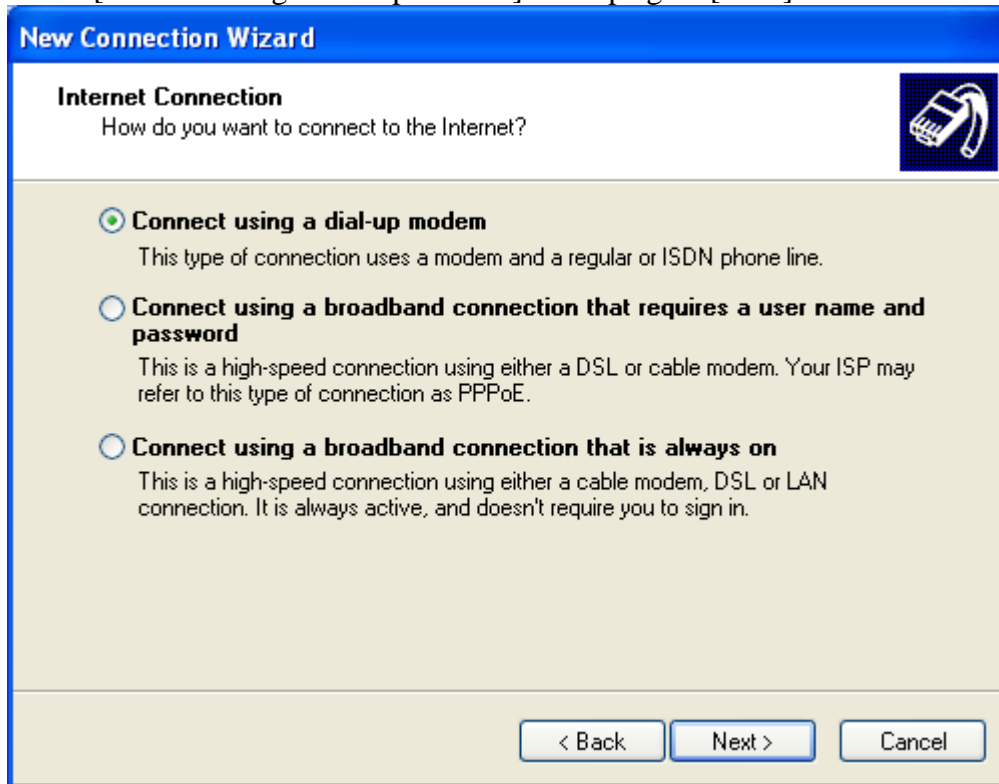


- Chose [Set up my connection manually] and click [Next] again.

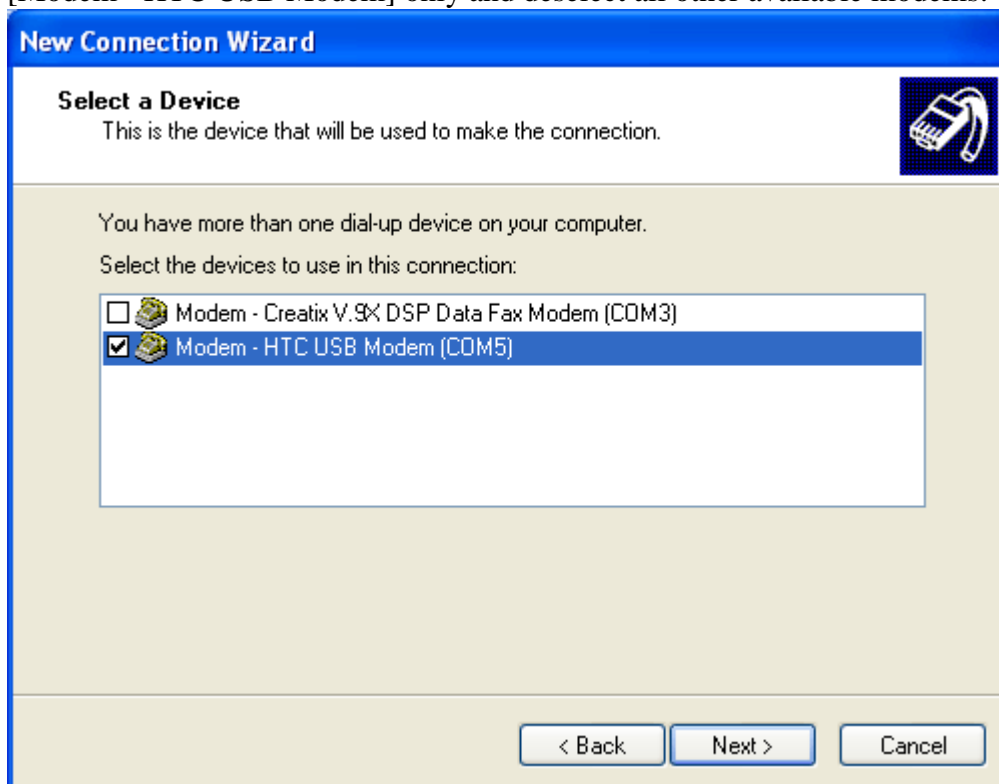


How to Setup Your Pocket PC as a Wireless Modem

- Select [Connect using a dial-up modem] and tap again [Next].



- Now you need to select which modem should be used for this connection. If you have several modems installed/available on your Notebook make sure to select [Modem - HTC USB Modem] only and deselect all other available modems.



How to Setup Your Pocket PC as a Wireless Modem

- In the next mask you can give your connection any meaningful name.



New Connection Wizard

Connection Name
What is the name of the service that provides your Internet connection?

Type the name of your ISP in the following box.

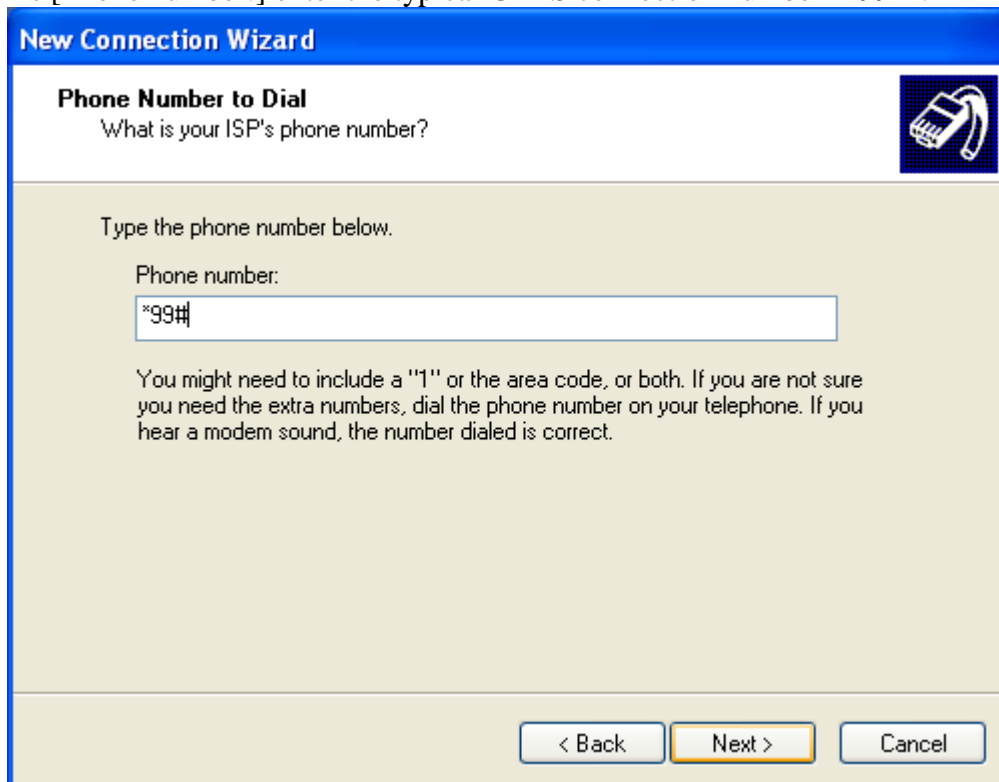
ISP Name

T-Mobile GPRS

The name you type here will be the name of the connection you are creating.

< Back Next > Cancel

- As [Phone number:] enter the typical GPRS connection number "*99#".



New Connection Wizard

Phone Number to Dial
What is your ISP's phone number?

Type the phone number below.

Phone number:

*99#

You might need to include a "1" or the area code, or both. If you are not sure you need the extra numbers, dial the phone number on your telephone. If you hear a modem sound, the number dialed is correct.

< Back Next > Cancel

How to Setup Your Pocket PC as a Wireless Modem

- Leave the [User name] and [Password] blank.



New Connection Wizard

Internet Account Information
You will need an account name and password to sign in to your Internet account.

Type an ISP account name and password, then write down this information and store it in a safe place. (If you have forgotten an existing account name or password, contact your ISP.)

User name:

Password:

Confirm password:

Use this account name and password when anyone connects to the Internet from this computer

Make this the default Internet connection

< Back Next > Cancel

- That's it; your new GPRS connection is ready to dial.



New Connection Wizard

Completing the New Connection Wizard

You have successfully completed the steps needed to create the following connection:

T-Mobile GPRS

- Share with all users of this computer

The connection will be saved in the Network Connections folder.

Add a shortcut to this connection to my desktop

To create the connection and close this wizard, click Finish.

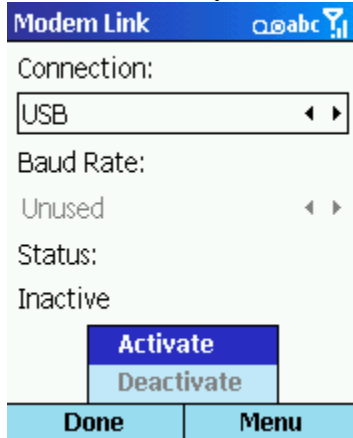
< Back Finish Cancel

How to Setup Your Pocket PC as a Wireless Modem

Dialing a GPRS Connection

Now your Windows XP Notebook is ready to connect to GPRS by using your Microsoft Windows Powered Pocket PC.

- Before you dial from your Notebook, always make sure you enable the [USB Connection] on your Pocket PC.

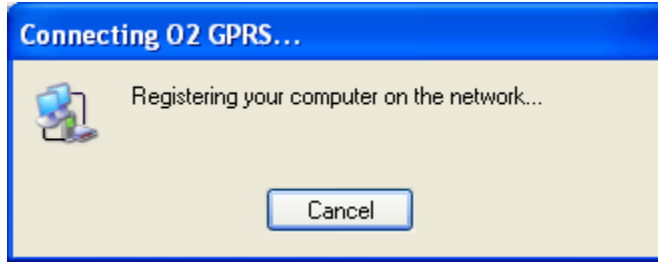


- Now open you [Connect to] option on your Notebook and open your connection.

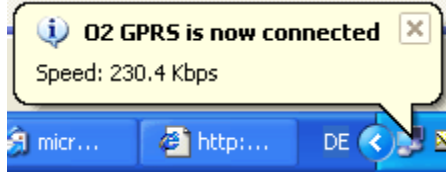


How to Setup Your Pocket PC as a Wireless Modem

- Press [Dial] and your Notebooks dial out into the GPRS network using your Pocket PC as modem.



- If everything worked fine you should get connected to the Internet.



That's it, you are ready to enjoy the true wireless Internet through GPRS now - wherever you are and wherever you go!